

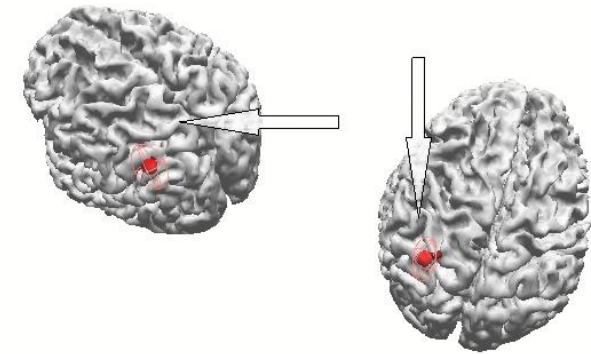
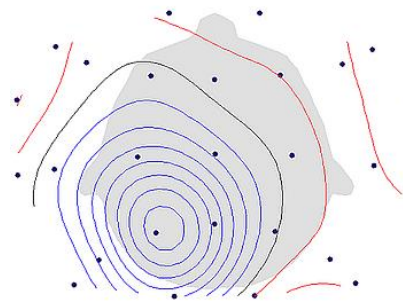
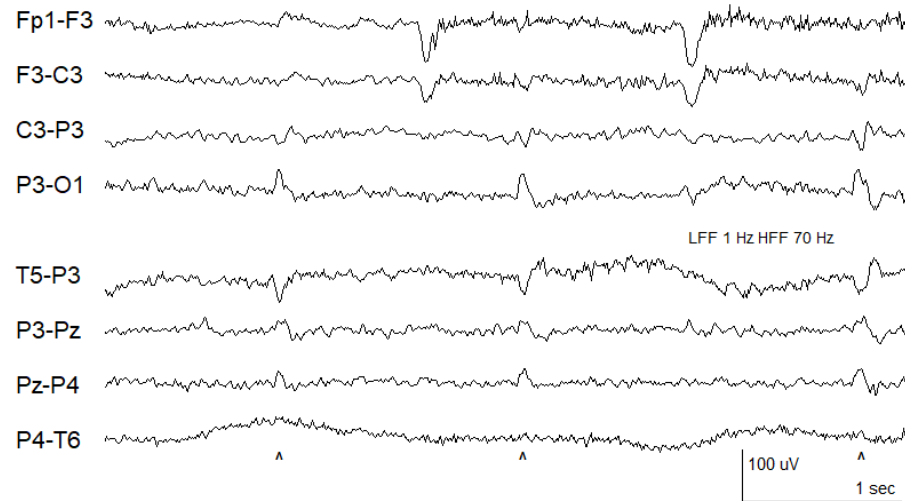
# Unilateral abdominal clonic seizures of parietal lobe origin: EEG findings

Danah Aljaafari<sup>1</sup>, Fábio A. Nascimento<sup>2</sup>, Alon Abraham<sup>2</sup>,  
Danielle M. Andrade<sup>2</sup>, Richard A. Wennberg<sup>2</sup>

<sup>1</sup> Department of Neurology, King Fahad Hospital of University, University of Dammam, Saudi Arabia

<sup>2</sup> Division of Neurology, Toronto Western Hospital, University of Toronto, Toronto, Ontario, Canada

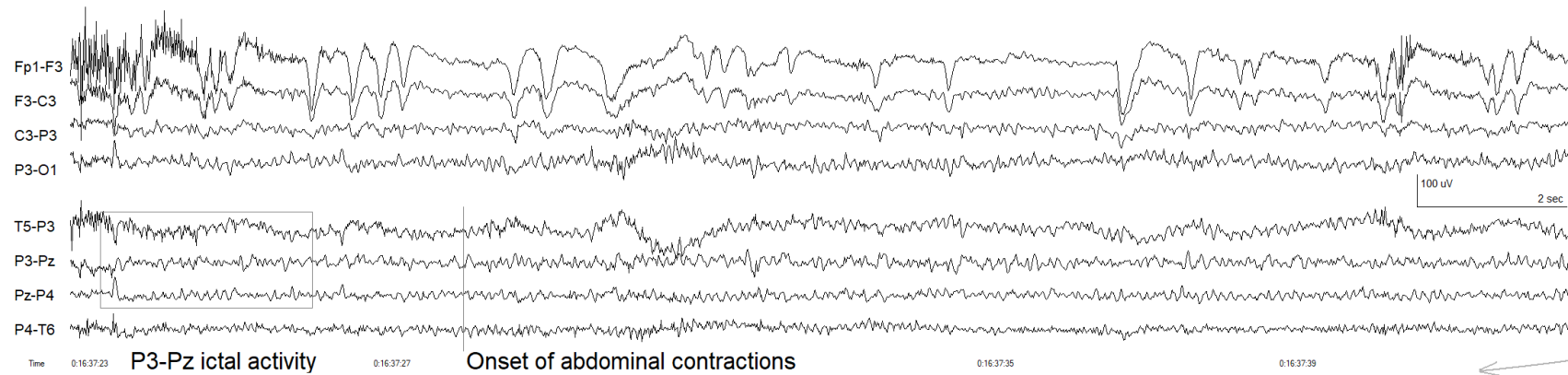
## EEG findings in a 26-year-old patient with right-sided abdominal clonic seizures



Left: Interictal epileptiform discharges and early ictal spikes localized to left mid parietal region (^)

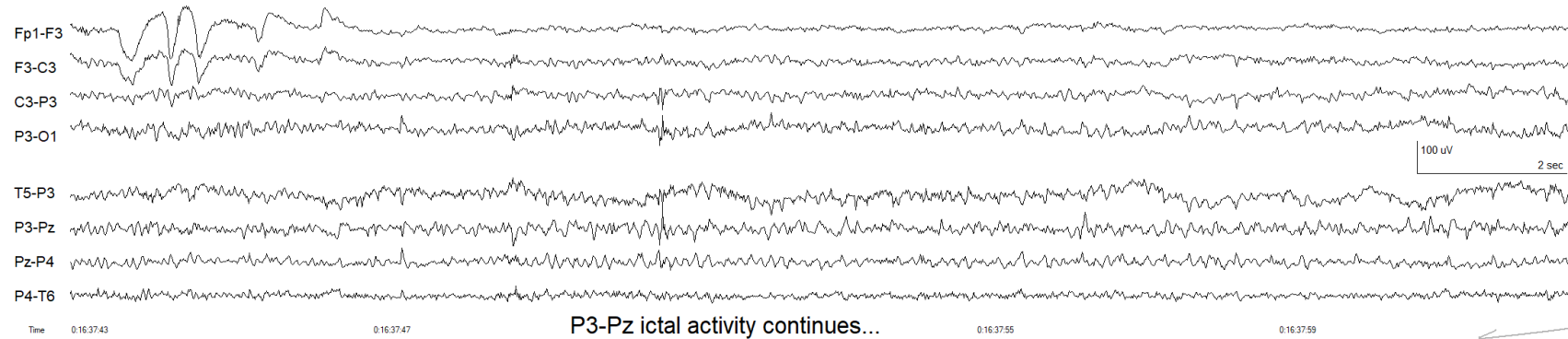
Middle: Voltage topographic map of mid parietal spikes

Right: Dipole source solution of mid parietal spikes, situated one gyrus posterior to the patient's postcentral gyrus (arrows)

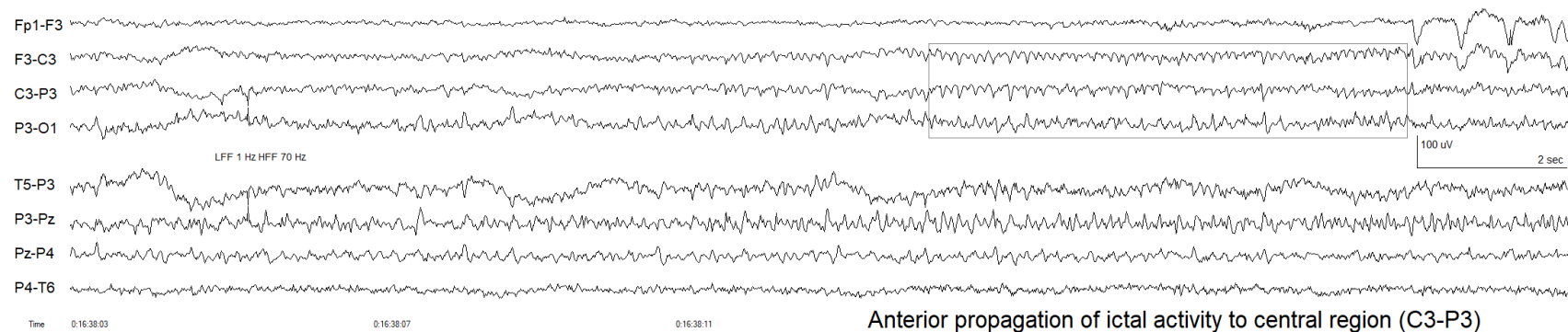


Ictal EEG recording of seizure shown in video sequence

Rhythmic ictal pattern at P3-Pz (first grey box) prior to clinical onset of abdominal clonic movements



P3-Pz ictal activity continues...



Anterior propagation of ictal activity to central region (C3-P3)

Propagation of ictal activity to central (C3-P3) region (second grey box)